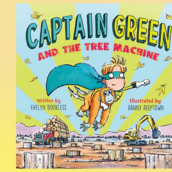
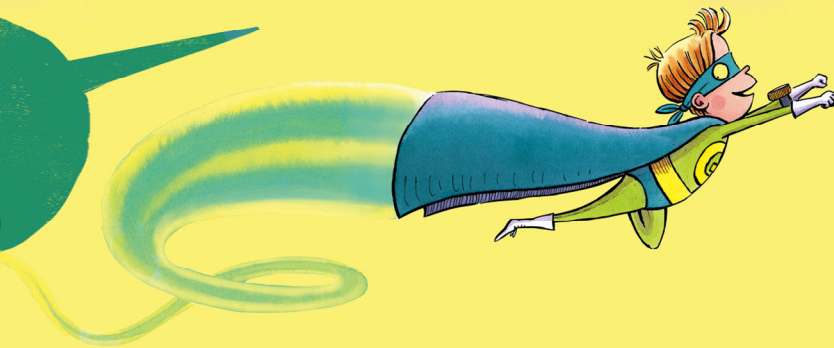


CREATE A PYGMY ELEPHANT HAND-PRINT MASTER-PIECE



YOU WILL NEED:

- Plates to hold paint
- Paint (grey, green, brown, black)
- Paint brushes
- Plain paper (Maybe you can use the back of a used piece?)



1. Put grey paint on one plate, brown on another and green on the last. You can use old lids from plastic containers too.
2. Pop one hand in the paint and press it down. Get your adult helper to do the same.
3. Carefully press each hand on the paper, side by side, to create the elephant's body, trunk and legs.

4. Then wash and dry your hands.
5. Press the side of your hand into the brown paint and press around the elephants to make lots of tree trunks.
6. Then use your fingertips, dipped in green paint, to create leaves on all the trees.
7. Finally use a brush to add the elephant's eyes, ears, mouth and tail.



Read more about these gentle animals here:

<https://www.borneoecotours.com/blog/things-you-need-to-know-about-the-borneo-pygmy-elephants-borneos-gentle-giants/>